



Lost Palms Collection

Cap Rock
Desert Ranch
Desert Veins
Jumbo Rock
Keys View
Ribbon Rock

Interface®

Invite a rugged, desert landscape indoors.

The naturally occurring patterns of distinctive Joshua trees, giant rock formations, and cracked stones from the deserts of the American southwest soothe and comfort. These organic designs and textures inspire Interface's Lost Palms Collection, and feature biophilic motifs intentionally designed at a larger scale (100 cm x 100 cm and 50 cm x 100 cm) to mimic the grandeur of this iconic terrain.

With six products in the Lost Palms Collection, the five foundational stone-inspired styles come in colourways of classic cool and warm greys. Jumbo Rock, Cap Rock and Keys View styles provide a smoother, lower profile that channels the less-rugged formations polished by erosion. Texture and cracks begin to show through Desert Veins, while Ribbon Rock unearths the most depth with its super-plush pile and clear marbling. Accent product Desert Ranch ushers in classic, American southwest motifs, shifting the colour palette into earthier tones





PRODUCT CAP ROCK COLOUR OAT INSTALLED MONOLITHIC
PRODUCT KEYS VIEW COLOUR BROWN INSTALLED ASHLAR



PRODUCT CAP ROCK COLOUR EBONY INSTALLED MONOLITHIC

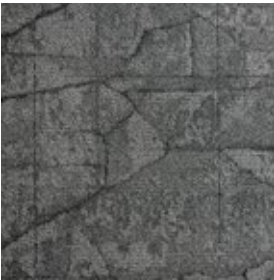
Cap Rock Colour Range



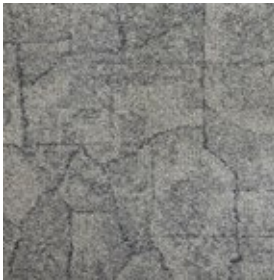
9922001 EBONY



9922002 FLANNEL



9922003 CHARCOAL



9922004 NATURAL



9922005 MIST



9922006 SHELL



9922007 BROWN



9922008 OAT

Specifications

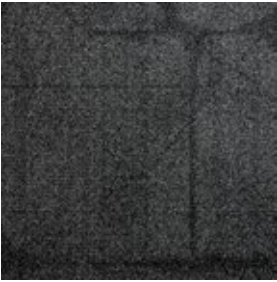
Style Code	9922
Product Construction	Tufted Textured Loop Pile
Yarn System	100% Recycled Solution Dyed Nylon
Machine Gauge	1/12
Pile Thickness	3.9 ± 0.5mm (Asia) 3.5 ± 0.5mm (Australia & New Zealand)
Total Thickness	6.7 ± 0.5mm (Asia) 6.5 ± 0.5mm (Australia & New Zealand)
Tile Size	100 x 100cm
Area of Use (Asia Only)	Commercial Heavy Use
ACCS Grading (Australia & New Zealand Only)	Commercial Extra Heavy Duty & Stairs
Lifetime Antimicrobial	Protekt®
Soil / Stain Protection	Intersept®

View the full product specification on [interface.com](https://www.interface.com)

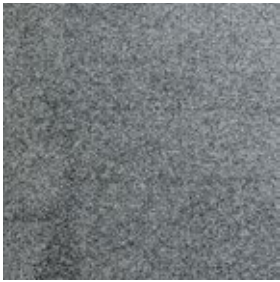
Installation Methods



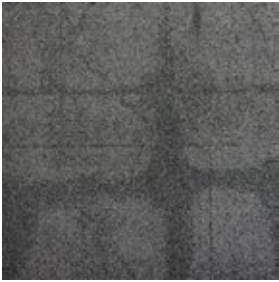
Jumbo Rock Colour Range



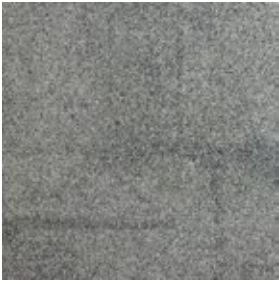
9921001 EBONY



9921002 FLANNEL



9921003 CHARCOAL



9921004 NATURAL



9921005 MIST



9921006 SHELL



9921007 BROWN



9921008 OAT

Specifications

Style Code	9921
Product Construction	Tufted Textured Loop Pile
Yarn System	100% Recycled Solution Dyed Nylon
Machine Gauge	1/12
Pile Thickness	3.3 ± 0.5mm (Asia) 3.0 ± 0.5mm (Australia & New Zealand)
Total Thickness	6.6 ± 0.5mm (Asia) 6.0 ± 0.5mm (Australia & New Zealand)
Tile Size	100 x 100cm
Area of Use (Asia Only)	Commercial Heavy Use
ACCS Grading (Australia & New Zealand Only)	Commercial Extra Heavy Duty & Stairs
Lifetime Antimicrobial	Protekt®
Soil / Stain Protection	Intersept®

View the full product specification on [interface.com](#)

Installation Methods



MONOLITHIC



PRODUCT JUMBO ROCK COLOUR BROWN INSTALLED MONOLITHIC

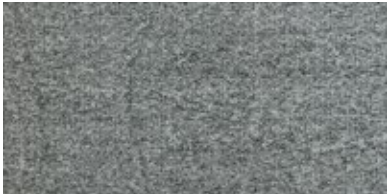


PRODUCT KEYS VIEW COLOUR OAT INSTALLED ASHLAR

Keys View Colour Range



9923001 EBONY



9923002 FLANNEL



9923003 CHARCOAL



9923004 NATURAL



9923005 MIST



9923006 SHELL



9923007 BROWN



9923008 OAT

Specifications

Style Code	9923
Product Construction	Tufted Textured Loop Pile
Yarn System	100% Recycled Solution Dyed Nylon
Machine Gauge	1/12
Pile Thickness	3.2 ± 0.5mm (Asia) 3.0 ± 0.5mm (Australia & New Zealand)
Total Thickness	6.4 ± 0.5mm (Asia) 6.0 ± 0.5mm (Australia & New Zealand)
Tile Size	50 x 100cm
Area of Use (Asia Only)	Commercial Heavy Use
ACCS Grading (Australia & New Zealand Only)	Commercial Extra Heavy Duty & Stairs
Lifetime Antimicrobial	Protekt®
Soil / Stain Protection	Intersept®

View the full product specification on interface.com

Installation Methods



ASHLAR

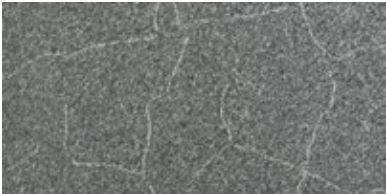


HERRINGBONE

Desert Veins Colour Range



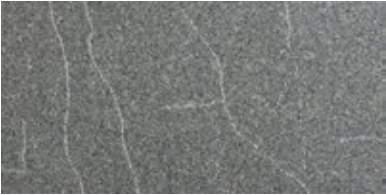
9925001 DARK SKY



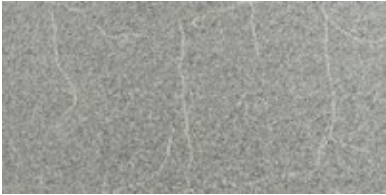
9925002 BOULDER



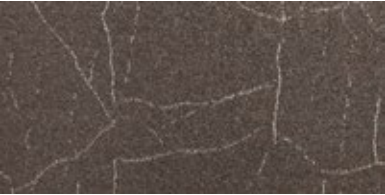
9925003 IRONWOOD



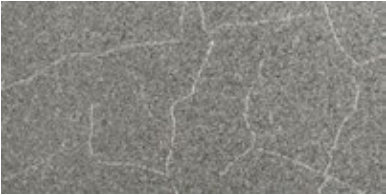
9925004 ACACIA



9925005 PALM GREY



9925007 ADOBE



9925008 COTTONWOOD



9925009 RIVERBED

Specifications

Style Code	9925
Product Construction	Tapestry Tufted Patterned Structured Loop Pile
Yarn System	100% Recycled Solution Dyed Nylon
Machine Gauge	1/10
Pile Thickness	3.8 ± 0.5mm (Asia) 3.5 ± 0.5mm (Australia & New Zealand)
Total Thickness	7.3 ± 0.5mm (Asia) 7.0 ± 0.5mm (Australia & New Zealand)
Tile Size	50 x 100cm
Area of Use (Asia Only)	Commercial Heavy Use
ACCS Grading (Australia & New Zealand Only)	Commercial Extra Heavy Duty & Stairs
Lifetime Antimicrobial	Protekt®
Soil / Stain Protection	Intersept®

View the full product specification on [interface.com](#)

Installation Methods



ASHLAR



HERRINGBONE



PRODUCT DESERT VEINS COLOUR PALM GREY INSTALLED ASHLAR



Desert Ranch Colour Range



9927001 SAGEBRUSH



9927002 CACTUS



9927003 SANDSTONE



9927004 SUNSET

Specifications

Style Code	9927
Product Construction	Tapestry Tufted Patterned Structured Loop Pile
Yarn System	100% Recycled Solution Dyed Nylon
Machine Gauge	1/10
Pile Thickness	5.2 ± 0.5mm (Asia) 4.5 ± 0.5mm (Australia & New Zealand)
Total Thickness	9.4 ± 0.5mm (Asia) 8.5 ± 0.5mm (Australia & New Zealand)
Tile Size	50 x 100cm
Area of Use (Asia Only)	Commercial Heavy Use
ACCS Grading (Australia & New Zealand Only)	Commercial Extra Heavy Duty & Stairs
Lifetime Antimicrobial	Protekt®
Soil / Stain Protection	Intersept®

View the full product specification on [interface.com](#)

Installation Methods



ASHLAR



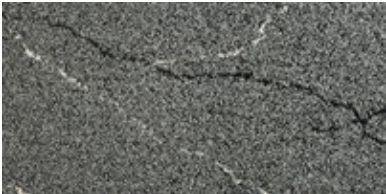
HERRINGBONE

PRODUCT DESERT RANCH COLOUR SANDSTONE INSTALLED ASHLAR

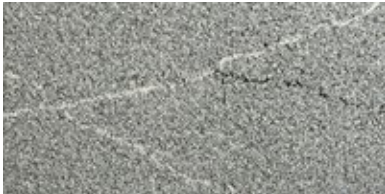
Ribbon Rock Colour Range



9926001 OVERLOOK



9926002 VISTA



9926003 MESA



9926004 CANYON

Specifications

Style Code	9926
Product Construction	Tapestry Tufted Patterned Structured Loop Pile
Yarn System	100% Recycled Solution Dyed Nylon
Machine Gauge	1/10
Pile Thickness	6.8 ± 0.5mm (Asia) 6.5 ± 0.5mm (Australia & New Zealand)
Total Thickness	10.9 ± 0.5mm (Asia) 10.5 ± 0.5mm (Australia & New Zealand)
Tile Size	50 x 100cm
Area of Use (Asia Only)	Commercial Heavy Use
ACCS Grading (Australia & New Zealand Only)	Commercial Extra Heavy Duty & Stairs
Lifetime Antimicrobial	Protekt®
Soil / Stain Protection	Intersept®

View the full product specification on [interface.com](#)

Installation Methods



ASHLAR

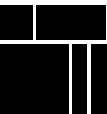


HERRINGBONE



PRODUCT RIBBON ROCK COLOUR MESA INSTALLED ASHLAR

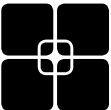
Why Our Modular Flooring?



Modular Flooring
Performance and flexibility. Interface's standard backing systems set the industry standard for modular performance. Tiles stay on the floor with no upcurl, no tapping and no rippling effect, yet are easy to selectively replace. Our modular carpet is easier to handle than bulky roll carpet and produces an average of just 2-5% waste compared to roll carpet's average of 15% . And it installs seamlessly with our LVT, no transition strips needed.



ReEntry
At Interface, an end of life solution of our products is a reality. ReEntry is our innovative programme to reclaim materials used in our product. Taking back our product at end of life is a service we provide our customers to ensure that none of the products they use will end up in landfill. Whether it is recycling into new product or re-purposing, we see our customer's waste as an opportunity for new product life.



TacTiles®
No glue installation. Our revolutionary TacTiles installation system eliminates the need for glue, adhering tiles securely together to form a floor that “floats” for greater flexibility, easier replacement and long-term performance. The result? Less mess, less waste and virtually no VOCs, not to mention an environmental footprint that is over 90% lower than that of traditional glue adhesives.



Intersept®
Mold protection. Our proprietary preservative, Intersept, protects our modular carpet against mould growth and odour-causing bacteria—guaranteed. Intersept treated carpet, with proper maintenance, shows no mould or bacterial growth when tested as per the ASTM E2471 Standard Test Method. Intersept is EPA-approved for safe use in carpet, water insoluble and contains no halogens, heavy metals, phenols or formaldehyde.



Protekt®
Stain protection. The life and performance of your flooring is extended with Protekt², our patented stain resistant protection. Protekt² uses advanced technology to provide a lasting barrier against permanent soiling and staining, which simplifies the cleaning process and enhances the longevity of your carpet. Protekt² is product specific, please refer to individual product specifications for details.



Health Product Declaration (HPD) –
A transparency tool for evaluating whether a product supports Green Chemistry. As part of our work on Health and Materials, Interface continuously reduces the environmental and health impacts of our products through elimination of materials of concern.



15-Year Warranty
Interface products are warranted for 15 years against excessive surface wear, edge ravel, backing separation, shrinking, stretching and static electricty even under castor chair conditions.



Local Manufacturing
We combine local responsiveness with a global experience. Being part of the same communities as our customers, we foster collaborative, committed, and productive relationships. Our carpet tiles are manufactured in Australia and China, contributing to local economies and the environment.

All Interface manufacturing facilities in the Asia Pacific region maintain registration to ISO 9001 Quality Management Systems and ISO 14001 Environmental Management Systems.

Third Party Certifications



Environmental Product Declaration (EPD)
The Environmental Product Declaration (EPD) is a third party verified environmental certification classified as Type III that quantifies and verifies the lifecycle impacts of products and goods according to the International Standards Organization (ISO) 14025, 14040, 14044 and EN 15804. EPDs help customers that are environmentally driven to evaluate the performance of a product and to make the best decision when choosing a product. Interface EPDs can be found on interface.com.



Global GreenTag GreenRate - Level A
Global GreenTag's GreenRate certification is a product rating system recognised by the Green Building Council of Australia and Green Building Council of New Zealand. Its assessment scheme aligns to the Green Star® Responsible Products program. All Interface products are certified "Level A".



Best Practice Guidelines for PVC
Our product proudly holds the Best Environmental Practice (BEP) PVC certification, a recognition of compliance with stringent environmental and social criteria in PVC manufacturing. This certification is a key contributor to Green Star certification, aligning with the GBCA's Responsible Products Framework. Our commitment to BEP guidelines demonstrates our dedication to environmental responsibility and product excellence.



Singapore Green Building Product (SGBP)
The SGBP certification is designed to evaluate and certify building products that meet specific sustainability and environmental performance criteria. The certification scheme helps building professionals identify products that are sustainable and more carbon efficient. Interface carpet tile products are certified "Leader" and LVT products are at "Excellent" Level.



NSF Certification
NSF International develops public health standards and certification programs that help protect the world's food, water, consumer products and environment. Interface carpet tile products are certified "Gold".



CRI Green Label Plus
The Carpet and Rug Insitute (CRI) Green Label Plus sets higher standards for indoor air quality and ensures that customers are purchasing the very lowest emitting products on the market. Interface Carpet Tiles and TacTiles have fulfilled the requirements for this certification.

Do more on interface.com

- Browse products, save and share favourites
- See images of products in a variety of room scenes
- Browse floor designs, change colours, upload your own image, download and share
- Get full specifications, sustainability certifications and more
- Sign up to get the latest information on Interface products and news

Our EPDs and certifications contribute credits towards Green Building Council's Green Star® Responsible Products program.

Green Star is the Green Building Council of Australia's sustainability rating system for the built environment. It is used to rate new and existing buildings, new fit-outs, and new precinct developments. The Green Building Council of Australia recognises Responsible Products that may contribute to a Green Star rating through its Responsible Credits.

We have tried our very best to accurately represent product colours. However, due to the nature of printed materials, colour of actual products may vary slightly. Please request a sample to see actual product colour.

Production specifications are subject to normal manufacturing tolerances and may be changed without notice. The visibility of joints may vary based on colour and pattern. Slight variation in colour among different production lots are normal and should be considered in the overall installation plan. Products covered by manufacturer's written warranty only. All other warranties, including without limitation any implied warranties of merchantability or fitness for particular purpose, are hereby disclaimed. Contact your representative for written warranty information.

www.interface.com

Australia

Interface Australia
local toll free: 1800 804 361

India

Interface India
tel: +91 76249 17934

South East Asia

Interface Asia
tel: +65 6478 1510

South Korea

Interface South Korea
tel: +82 2 555 1734

Japan

Interface Japan
tel: +81(0)3-6892-5513

Beijing

Interface China
tel: +86 10 6590 7810

Hong Kong

Interface China
tel: +852 2802 0838

Shanghai

Interface China
tel: +86 21 6340 3868

10/2024



Climate change is undeniable. And reversible. Our mission is to prove it.
Join the #ClimateTakeBack and help create a climate fit for life.